

Top Stories This Week

- October CPI Inflation At 5% Vs 4.41% (MoM)
- September IIP Growth At 3.6% Vs 6.3% (MoM). August IIP Revised To 6.3% From 6.4%
- Indiabulls Housing Finance to buy UK 40% in UK based OakNorth Bank for \$100mn (PTI)
- NMDC Q2 -Net profit at Rs 810.2 crore versus Rs 1,566.7 crore (YoY). Total income at Rs 1,602.2 crore versus Rs 3,105 crore (YoY)
- Persistent Systems to acquire assets of US Based Co Akumina's Content Mgmt Svcs Biz.
- HPCL Q2 Net Loss At ` 320.5 Cr Vs Profit Of ` 850.2 Cr (YoY) Total Income At ` 42,072 Cr Vs ` 51,667 Cr (YoY)
- Bank Of India Q2 Net Loss At ` 1,126 Cr Vs Profit ` 786 Cr (YoY) NII At ` 3,019.7 Cr Vs ` 3,030.7 Cr (YoY). Net NPA At ` 16,466 Cr Vs ` 15,789 Cr (QoQ)
- Hathway Cable Board Approves Demerger Of ISP Business Into Hathway Broadband.
- Govt Hikes Excise Duty On Petrol By ` 1.60/Litre, diesel by Rs. 0.40/litre
- ONGC Q2 Net Profit At 4,842 Cr Vs ` 5,460 Cr (QoQ) Total Income At 20,679 Cr Vs ` 22,825 Cr (QoQ).
- Coal India to invest ` 6000 cr to set up solar power units (ET)

Weekly Indices Change

Index	Close	Prev Close	Chg. (%)
SENSEX	25610	26265	-2.49
NIFTY	7762	7954	-2.41
MIDCAP	10653	10826	-1.60
SMLCAP	11125	11052	0.66
METAL	7064	7153	-1.24
OIL&GAS	8782	9108	-3.58
AUTO	18305	18264	0.22
TECK	5893	6096	-3.33
BANKEKX	19362	19496	-0.69
IT	10923	11279	-3.16
FMCG	7770	7869	-1.26
HC	16345	16970	-3.68
PSU	6682	6844	-2.37
CD	12039	11767	2.31
POWER	1848	1878	-1.60
CG	14178	14535	-2.46
REALTY	1294	1345	-3.79

Global Indices

DOW	17245	17910	-3.71
NASDAQ	4927	5147	-4.27
FTSE	6118	6353	-3.70
NIKKEI	19596	19265	1.72
HANGSENG	22396	22867	-2.06

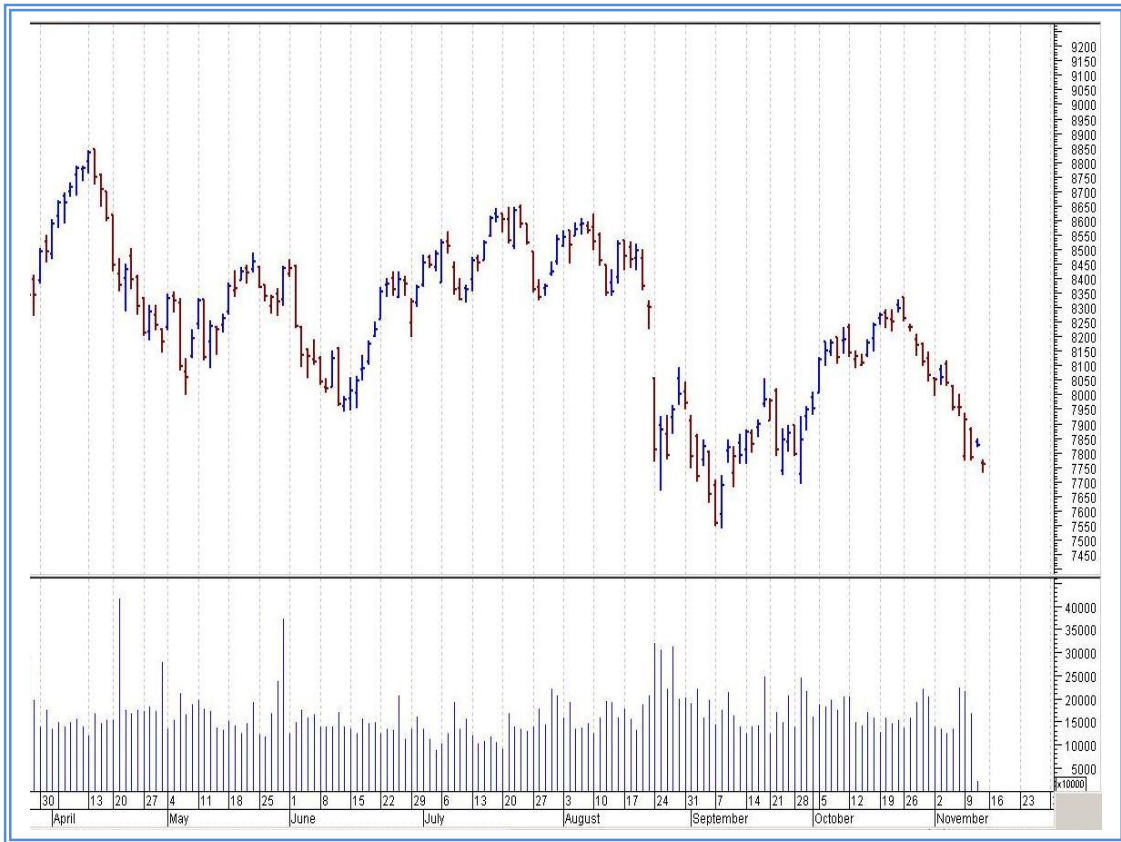
Top Gainers Weekly

Scrip	Price	% Chg
Future Consumer Ent.	21.80	17.84
Hathway Cable & Data	46.90	13.83
Arvind Infrastructur	71.70	13.63
Motherson Sumi	273.55	11.31
Wonderla Holidays Ltd	361.00	9.21

Top Losers Weekly

Scrip	Price	% Chg
ABG Shipyard	81.80	28.65
Dr. Reddy's Labs	3388.55	21.84
RelianceCommu.Ltd	66.30	18.70
Adani Enterprises Ltd	75.10	15.05
Sun Pharma.	740.50	14.74

Nifty Corner



Support & Resistance						
S3	S2	S1	Nifty	R1	R2	R3
7500	7550	7650	7762	7850	7900	8000
Moving Averages						
20DMA	50DMA	100DMA	200DMA			
8175	8015	8205	8375			

Market Commentary

Key indices slumped in a truncated trading week as increased chances of Federal Reserve committing to an interest-rate increase in December 2015 and domestic data showing acceleration of consumer price inflation in October 2015, deceleration in industrial production growth in September 2015 dampened sentiment. A poor showing of the BJP-led National Democratic Alliance (NDA) in the Bihar assembly elections has also raised concerns among investor that the opposition parties may disrupt the Centre's economic reform process. The barometer index, the S&P BSE Sensex, slipped below the psychological 26,000 mark. For the next week Nifty likely to trade in the range between 7850 – 7900 in the upper side and 7650 – 7550 in the lower side.

Stocks at 52 wk High

Scrip	Cmp
Essar Oil	217.30
Majesco	508.60
Radico Khaitan	120.90
Sasken Comm	312.40
Wonderla	358.40

Stocks at 52 wk Low

Scrip	Cmp
Adani Ports	267.35
Ambuja Cements	192.65
BHEL	177.95
Larsen	1331.20
Oil India	369.15

FII Activity

Date	Figures in crore
09/11	-861.06
10/11	-661.95
11/11	-11.93
12/11	--
13/11	-746.7
NET	-2281.64

DII Activity

Date	Figures in crore
09/11	621.18
10/11	658.33
11/11	10.52
12/11	--
13/11	70.89
NET	1360.92

Weekly Stock Idea

Scrip	B/S	Cmp	Tgt
HINDPETRO	B	763	785
TATACHEM	B	419	435
CROMPGREAV	B	169	178
WONDERELA	B	358	385
FSL	B	36	40

Buy on dips & Sell on rise with Stop-loss of 3%

Volume Breakout Stocks

Scrip	Cmp
Indiabulls Hsg	643.50
UCAL Fuel	103.90
Zee Media	25.50
Mastek	171.90
CESC	556.70

Week Ahead

MAJOR RESULTS/AGM MEETING THIS WEEK:

16 NOV: SANWARIA, ACROPETAL

VISIT US AT: WWW.INDIRATRADE.COM

Disclaimer

This report is for private circulation within the Indira Group. This report is strictly confidential and for information of the selected recipient only and may not be altered in any way, transmitted to, copied or distributed, in part or in whole, to any other person or to the media or reproduced in any form. This report should not be construed as an offer or solicitation to buy or sell any securities or any interest in securities. It does not constitute a personal recommendation or take into account the particular investment objectives, financial situations, or any such factor. The information, opinions estimates and forecasts contained here have been obtained from, or are based upon, sources we believe to be reliable, but no representation of warranty, express or implied, is made by us to their accuracy or completeness. Opinions expressed are our current opinions as of the date appearing on this material only and are subject to change without notice.